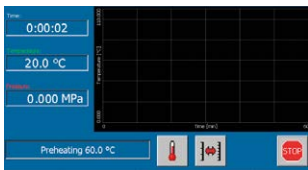




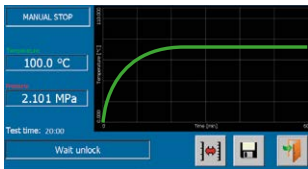
B091M PAV PRESSURE AGING VESSEL

STANDARDS: EN 14769 | ASTM D6521 | AASHTO R28

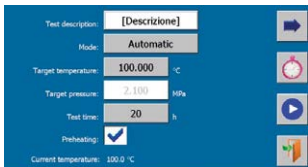
PAV is an instrument used to simulate in-service oxidative aging that occurs in asphalt binders with over 5 to 10 years of service life (long-term aging). The unit consists of a stainless steel vertical pressure vessel (AISI 304 with CE, PED and ASME certifications) enclosed in a cabinet with encased band heaters. A source of compressed air with a pressure of at least 2.1 MPa and a pressure regulator generates and maintains the aging condition required by the test.



Pre-heating mode to save time before starting the test.



Pressure and temperature can be monitored in real time and registered during the test.



3 possible operation modes:
 - Automatic: as per Standards.
 - Semi-Auto: temperature selectable up to 130 °C.
 - Manual: testing time selectable up to 99 hours.



Easy to open: the cover of the vessel can be placed in a resting position easily by the operator.



Sample rack for testing up to 10 samples at the same time, in a flat position.



Pressure vessel is CE, PED and ASME certified to resist at a design pressure of 24.5 bar at 148 °C

MAIN FEATURES

- 3 operating modes: Fully Automatic, Semi-Automatic and Manual.
- Fast pre-heating system selectable up to 80 °C in order to reduce the conditioning time.
- Timer for setting time and date to start the test at the desired time.
- Innovative cooling system, starting at the end of the test.
- CE, PED and ASME certification.
- Testing time up to 99 hours.
- Programmable temperature range up to 130 °C.
- USB port on the front for software updates and data storage.

TECHNICAL SPECIFICATIONS

- Operating pressure: 2.1 ± 0.03 Mpa (304 psi)
- Programmable temperature range: from ambient temperature to 130 °C, res: ± 0.1 °C
- Programmable pre-heating function: up to 80 °C
- Test temperature uniformity: ± 0.5 °C
- Testing time: up to 99 hours
- Safety equipment in all test conditions: Over pressure relief valve and Over temperature limit switch.

Power supply: 230V 1ph 50Hz 10A

Dimensions: 450x650x500 mm approx.

Weight: 80 Kg approx.